



2018

eodent
Let's smile together



ABOUT US

Codent's history began in 1985 when Mark Fang opened a dental and surgical instrument development and production centre in Taipei (Taiwan). Several years later, he made the decision to transfer the business to Kaohsiung, the nerve centre of the medical industry in South East Asia. Since then, Codent has continued to specialise in the design, manufacture and distribution of dynamic dental and surgical instruments aiming for excellence in each of its three areas: R&D, Production and Sales.

Considered as the region's pioneer in the dental industry, today Codent is one of the leading companies in the sector in Asia and worldwide. Operating in nearly 100 countries, Codent has cutting-edge infrastructures combining technicality, quality and innovation enabling it to position itself as the perfect partner for the most demanding dentists.

In order to be closer to its customers in the Europe/Middle East/Africa (EMEA) zone, Codent set up a European subsidiary in Leipzig (Germany), Codent Europe GmbH to develop its regional platform responsible for distribution, technical support, customer service and training.

Mark Fang

Founder (Codent TW Headquarter)

IC Fang

President (Codent TW Headquarter)

Bruno LAMOUREUX

President (Codent Europe)

RESEARCH AND DEVELOPMENT

Codent's design office in Kaohsiung has established itself as one of the most important in Asia in the search for innovative technologies for air turbines, contra-angles, micromotors and surgical devices. Its regular collaborations with design offices in Europe and the United States, its quality standards which are some of the highest on the market and the stringent nature of its specifications in terms of precision and hygiene, guarantee the development of high-level products that match the expectations of the most demanding users. Constantly listening to dentists, Codent continues to innovate and design products suited to their constraints and the specific features of their job.

PRODUCTION

State-of-the-art equipment, the use of high-quality materials and extensive testing means that the Codent range complies with the strictest standards. Codent is ISO 13485 certified.

CODENT benefits



Durable

Even after several years of use, the push button chuck and the clamping mechanism retain their holding strength.



Titanium

The handpieces in the Apollo range have a anti-slip titanium coating which increases the durability of the instruments and ensures a comfortable grip.



Precision

The handpieces offer optimal torque enabling practitioners to work with precision for the comfort of their patients.



Quiet

The handpieces in the Apollo range are some of the quietest on the market due to the quality of their ceramic bearings.



Optic

The illumination of the handpieces (up to 32,000 lux) guarantees maximum visibility for practitioners.



Sterilization

The handpieces are designed to be sterilised regularly by autoclaving and to withstand temperatures up to 135°C while remaining durable and efficient.



Thermal disinfection

The option to use a thermal disinfectant to clean and disinfect the handpieces prevents the risk of infection.

CONTENTS

Air turbines/Couplings	4
Air turbines	6
Couplings	14
Contra-angles	18
Oral Hygiene	26
Prophy jet	26
Prophylaxis powder	28
Micromotors	30
Electric micromotors	32
Air motors	38
Accessories	42
Spare parts	44

PRECISION AND EFFICIENCY



APOLLO RANGE

Excellent torque

Ceramic Bearings

Perfect illumination

Titanium coating

Lightweight



HIGH SPEED AIR TURBINES

Excellent torque and excellent visibility.
Air turbine designed for all applications in restorative
and prosthesis treatments.
Designed to feel good in the hand.

APOLLO SERIES A6 AIR TURBINES

four sprays - dual coat titanium coating - ceramic bearings - 2-year warranty



MODEL A6L

Standard head - NSK® PTL®QUICK coupling
Burs: 1.6 - Cellular glass optic
Rotation: 420,000 rpm
Head size: Ø12.4 x H12.9 mm



MODEL A6N

Standard head - NSK® MACH®QUICK coupling
Burs: 1.6 - No cellular glass optic
Rotation: 380,000 rpm
Head size: Ø12.4 x H12.9 mm



MODEL A6KL

Standard head - KaVo® MULTIflex® coupling
Burs: 1.6 - Cellular glass optic
Rotation: 380,000 rpm
Head size: Ø12.4 x H12.9 mm



MODEL A6K

Standard head - KaVo® MULTIflex® coupling
Burs: 1.6 - No cellular glass optic
Rotation: 380,000 rpm
Head size: Ø12.4 x H12.9 mm

APOLLO SERIES A5 AIR TURBINES

four sprays - dual coat titanium coating - ceramic bearings - 2-year warranty



MODEL A5L

Small head - NSK® PTL®QUICK coupling
Burs: 1.6 - Cellular glass optic
Rotation: 420,000 rpm
Head size: Ø11.2 x H12.5 mm



MODEL A5N

Small head - NSK® MACH®QUICK coupling
Burs: 1.6 - No cellular glass optic
Rotation: 420,000 rpm
Head size: Ø11.2 x H12.5 mm



MODEL A5KL

Small head - KaVo® MULTIflex® coupling
Burs: 1.6 - Cellular glass optic
Rotation: 420,000 rpm
Head size: Ø11.2 x H12.5 mm



MODEL A5K

Small head - KaVo® MULTIflex® coupling
Burs: 1.6 - No cellular glass optic
Rotation: 420,000 rpm
Head size: Ø11.2 x H12.5 mm

APOLLO A45 SERIES AIR TURBINES

triple spray - dual coat titanium coating - ceramic bearings - 2-year warranty



MODEL A45L

45° head - NSK® PTL® QUICK coupling
Burs: 1.6 - Cellular glass optic
Rotation: 450,000 rpm
Head size: Ø11 x H13.5 mm



LED



MODEL A45KL

45° head - KaVo® MULTIflex® coupling
Burs: 1.6 - Cellular glass optic
Rotation: 450,000 rpm
Head size: Ø11 x H13.5 mm



LED

MODEL A45K

45° head - KaVo® MULTIflex® coupling
Burs: 1.6 - No cellular glass optic
Rotation: 450,000 rpm
Head size: Ø11 x H13.5 mm

APOLLO A45 SERIES AIR TURBINES

triple spray - dual coat titanium coating - ceramic bearings - 2-year warranty



MODEL A45 M4

45° head - 4-hole connection
Burs: 1.6 - No cellular glass optic
Rotation: 450,000 rpm



45° head angle making
it easier to treat
hard to reach areas

APOLLO A4 SERIES AIR TURBINES

single spray - dual coat titanium coating - ceramic bearings - 1-year warranty



MODEL A4 M4

Standard head - 4- holes connection

Burs: 1.6 - No cellular glass optic

Rotation: 360 000 rpm ~ 420 000 rpm

Head size: Ø12.5 x H12.6 mm



MODEL A4 B2

Standard head - 2- holes connection

Burs: 1.6 - No cellular glass optic

Rotation: 360 000 rpm ~ 420 000 rpm

Head size: Ø12.5 x H12.6 mm



MODEL A3 M4

Small head - 4- holes connection

Burs: 1.6 - No cellular glass optic

Rotation: 380 000 rpm ~ 450 000 rpm

Head size: Ø10.9 x H11.9 mm



MODEL A3 B2

Small head - 2- holes connection

Burs: 1.6 - No cellular glass optic

Rotation: 380 000 rpm ~ 450 000 rpm

Head size: Ø10.9 x H11.9 mm



Dual Coat



Couplings compatible with all optic and non-optic air turbines



Q6M- LED COUPLING

Compatible with NSK® PTL® instruments
6-holes - LED illumination

Q4M COUPLING

Compatible with NSK® MACH® instruments
4-holes - No light



Q6K- LED COUPLING

Compatible with KaVo® MULTIflex® instruments
6-holes - LED illumination



Q6KW- LED COUPLING

Compatible with KaVo® MULTIflex® instruments
6-holes - LED illumination - Water controller



Q4K COUPLING

Compatible with KaVo® MULTIflex® instruments
4-holes - Without illumination



A6L
A6N



A5L
A5N



A45L



Q4M/Q6M-LED



A6KL
A6K



A5KL
A5K



A45KL
A45K



Q4K



Q6K-LED



Q6KW-LED



Q6K-LED/ Q6KW-LED/ Q4K



Q4M / Q6M-LED



4 HOLES



APJ KV

APJ NM

APJ M4



TECHNOLOGY AND FUNCTIONALITY

RANGE APPOLO

Exceptional durability

Excellent illumination

DUAL COAT

Lightweight



CONTRA-ANGLES AND HANDPIECES

Powerful and durable for precision work, an ergonomic design making it feel good in the hand and reducing vibrations so as to guarantee daily comfort for both doctor and patient.

APOLLO SERIES CONTRA-ANGLES

both cellular glass optic and no cellular glass optic , Dual Coat titanium coating



MODEL A65L

1:5 Increasing by 5

Quattro spray - Cellular glass optic - Burs: 1.6

Head size: Ø9.9 H 12.5 - Max. speed: 200,000 rpm

MODEL A65

1:5 Increasing by 5

Quattro spray - No cellular glass optic - Burs: 1.60

Head size: Ø9.9 H 12.5 - Max. speed: 200,000 rpm



MODEL A61L

1:1 Direct drive

Single spray - Cellular glass optic - Burs: 2.35

Head size: Ø9.9 H 12.5 - Max. speed: 40,000 rpm

MODEL A61

1:1 Direct drive

Single spray - No cellular glass optic - Burs: 2.35

Head size: Ø9.9 H 12.5 - Max. speed: 40,000 rpm

APOLLO SERIES CONTRA-ANGLES

both cellular glass optic and no cellular glass optic , Dual Coat titanium coating



MODEL A16L

16:1 reduction by 16

Single spray - Cellular glass optic - Burs: 2.35

Head size: Ø9.6 H 11.8 - Max. speed: 2,500 rpm (for endodontic time)

MODEL A16

16:1 reduction by 16

Single spray - No cellular glass optic - Burs: 2.35

Head size: Ø9.6 H 11.8 - Max. speed: 2,500 rpm (for endodontic time)



MODEL A11L

1:1 straight handpiece, direct drive

Single spray - Cellular glass optic

Burs: 2.35 - Max. speed: 40,000 rpm

MODEL A11

1:1 straight handpiece, direct drive

Single spray - No cellular glass optic

Burs: 2.35 - Max. speed: 40,000 rpm

APOLLO SERIES SURGICAL CONTRA-ANGLES

Cellular glass optic , non-Cellular glass optic , dual coat titanium coating, 2-year warranty



MODEL A20L

20:1 reduction internal/external implant dual irrigation system
Max. torque 80 Ncm - Cellular glass optic
Burs: 2.35: head size Ø9.9 H 11.8 min.

MODEL A20

20:1 reduction internal/external implant dual irrigation system
Max. torque 80 Ncm - No cellular glass optic
Burs: 2.35 head size Ø9.9 H 11.8 min

- Body coated in dual coat titanium
- Push button
- Max. torque 80 Ncm
- Max. speed 2,000 rpm
- Suitable for all Type E surgery motors



CONTRA-ANGLES HEAD

1-year warranty



MODEL A31LRK KaVo®

Prophylaxis - 2:1 reduction - Max. speed 20,000 rpm
Attachments (brushes, cups)



MODEL A80LD K KaVo®

Restorative 1:1 direct drive - Max. speed 40,000 rpm
Burs: 1.60



MODEL A68LH K KaVo®

Restorative 1:1 direct drive - Max. speed 40,000 rpm
Burs: 2,35



MODEL A67LH K KaVo®

Restorative 2:1 reduction - Max. speed 20,000 rpm
Burs :2,35

CONTRA-ANGLES HEAD

1-year warranty



MODEL A20LP K

KaVo® No cellular glass optic contra-angle handpiece
1:1 direct drive - Max. speed 40,000 rpm - E-type connector

MODEL A20LP LK

KaVo® Cellular glass optic contra-angle handpiece
1:1 direct drive - Max. speed 40,000 rpm - E-type connector



MODEL A7LPK

KaVo® No cellular glass optic contra-angle handpiece
2.7:1 reduction - Max. speed 15,000 rpm - E-type connector

MODEL A7LPKL

KaVo® Cellular glass optic contra-angle handpiece
2.7:1 reduction - Max. speed 15,000 rpm - E-type connector



MODEL A29LP K

KaVo® No cellular glass optic contra-angle handpiece
7.4:1 reduction - Max. speed 5,400 rpm - E-type connector

MODEL A29LP KL

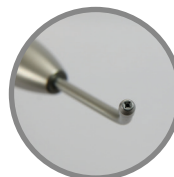
KaVo® Cellular glass optic contra-angle handpiece
7.4:1 reduction - Max. speed 5,400 rpm - E-type connector



Oral hygiene

Prophylaxis.

Apollo prophy Jet is an air powered polishing system in the form of a straight handpiece connected to a coupling. Light and easy to clean, Apollo prophy Jet guarantees optimal results when removing stains and is used with Magic Pearl prophylaxis powder.



The 80mm attachment, set at a 60° angle, is star-shaped so the 4 sprays provide the necessary precision to treat hard to reach areas.



The handpiece, which can be autoclaved, is connected to a tank.



The tank has 8 holes guaranteeing perfect air circulation.



MODELE APJ KV

APOLLO Prophy Jet KaVo® MULTiflex® coupling



MODELE APJ NM

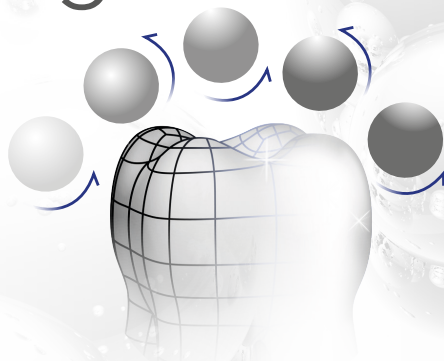
APOLLO Prophy Jet NSK® PTL® QUICK coupling



MODELE APJ M4

APOLLO Prophy Jet - Connection Midwest 4 holes

Magic Pearl



For around ten years, MAGIC PEARL powder has proved to be a reliable and non-aggressive prophylaxis powder. The polishing effect of the grains provides gentle effective cleansing. Today, we have improved MAGIC PEARL yet further.



Micro-beads 50 to 60um

Non-abrasive mechanical tooth cleaning



Respect for the enamel

Enamel protection, tested in a professional laboratory.



Treatments

Prophylactic and gum disease treatments



pH Stabilisation

Reduces oral acidity, neutralises pH within 10 days.



Effectiveness

Significant increase in whiteness.



Limits gingival haemorrhages

Significant coagulant effect, especially in the gums during subgingival treatment.

PROPHYLAXIS POWDER

Developed and tested by dentists.

Magic Pearl powder has spherical grains which safely eliminate stains, biofilm and tartar without causing a risk to the tooth enamel and gums. Its calcium-carbonate based composition helps to minimise cleaning of your air polisher.

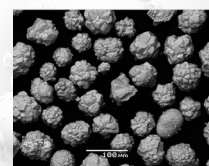
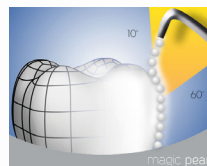
Approved by European and international standards.

The powder reduces the acidity of oral fluids and prevents the development of bacteria by impeding the formation of biofilm. This product is ideal for treating the teeth of patients sensitive to sodium bicarbonate or who suffer from high blood pressure.

Non-abrasive, non-invasive.

The very low hardness* of the CaCO_3 particle is less than the hardness of the dentine, so it does not damage the enamel while the hardness of other powders (NaHCO_3) has an abrasive effect on the tooth surface.

*Source: Friedrich Mohs' scale (1-10) measuring the hardness of minerals



MP-1

Magic Pearl Prophylaxis
Box of powder of 4x300g bottles

A robotic arm, likely a laser cutter or welder, is shown in profile on the right side of the frame. It is emitting a very bright, intense beam of light that tapers as it extends downwards. The background is a solid, deep black, which makes the light from the arm stand out prominently. In the lower-left foreground, there is a blurred, out-of-focus view of a control panel or machine interface, featuring some green indicator lights and a circular dial. The overall composition is minimalist and high-contrast, emphasizing the power and precision of the technology.

SPEED AND POWER

ELECTRIC MOTOR



iM100

Brushless and LED Electric motor set

iM100
brushless optic electric micromotor set
equipped with a control box, adaptor and cable
E-motor type connection - LED light

- Im100 - Brushless electric motor
- Max. Torque: 3.4 Ncm
 - Max. speed: 2,000 rpm - 40,000 rpm
 - Weight: 87g
 - Light: LED
- Control Box
- Adaptor: AC 100-240V
 - Voltage: DC 32V 50/60Hz
 - Output power: 120W max.
 - Dimensions: D150mm x W125mm x H56mm
 - Weight: 500g
 - Function: 2 memory modes, reverse rotation adjustment, three speeds



Air

C4-hole cable to connect the dental chair to the control box



Electricity

Connection cable from the micromotor to the control box



Activation

Connect the power cable to the power supply



iM100 MOTOR
Electric motor
E-Motor type, led illumination



iM100 CABLE
Electric motor cable

iM100 - integrated system

LED, brushless electric motor and its individual components

iM100- integrated system

Brushless electric micromotor with a control box E-Motor type, led illumination

- Output power: 24V AC 50/60Hz
- Max. torque: 3.4 Ncm
- Max. speed: 2,000 rpm - 40,000 rpm
- Control box dimensions: W123mm x H63mm



iM100 MOTOR

Electric motor
E-Motor type, led illumination



iM100 CABLE

Electric motor cable



AIR MOTORS



AIR MOTORS

1-year warranty



MODEL AI4N

Internal spray - 25,000 rpm - Water controller
Midwest 4- holes connection



MODEL AI2N

Internal spray - 25,000 rpm - Water controller
Borden 2 - holes connection



MODEL AI6N-D

Internal spray - 25,000 rpm - Water controller
Led illumination - 6-holes connection



MODEL AE4N

External spray - 25,000 rpm
Midwest 4-holes connection



MODELE AE2N

External spray - 25,000 rpm
Borden B2 - holes connection



AIR MOTORS

1-year warranty



MODEL H11

Handpiece with external spray - 1:1 direct drive 40,000 rpm Burs:
2.35



MODEL H41

External spray contra-angle - 1:1 direct drive
Max. speed 40,000 rpm - Burs: 2.35



MODEL TBIPA1

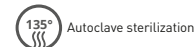
Internal spray head
1:1 drive max. speed 40,000 rpm - Burs: 2.35

Air Motor + Handpiece SET

MODEL AE4N + MODEL H11 + MODEL H41



MODEL AE2N + MODEL H11 + MODEL H41



ACCESSORIES

ACCESSORIES



Light power pack

A power supply
two 6-hole cable



Power module

Two-way power source with electricity



Cable

6-holes connector
for high speed handpieces



Cable

4- holes connector
for high speed handpieces



Cable

2- holes connector
for high speed handpieces



Lubricant

Premium Plus Spray 500ml
Lubricates & cleans



Prophy tip

handpiece with nozzle
APJ 001



Cover Prophy

APJ 003

SPARE PARTS

SPARE PARTS

cartridge



CCA345

For Codent A45L / A45 air turbine



CCHPC4

For Codent A6
Codent Apollo four sprays - Standard head



CCHPZ4

For Codent A5
Codent appolo four sprays - Small head



CCHP1S

For Codent A4
Codent Apollo single spray - Standard head



CCHP1M

For Codent A 3
Codent Apollo, single spray - Small head

WARRANTY CONDITIONS

You have just purchased instruments from the Codent range.

Each Codent product sold is accompanied by a manual for use and maintenance which is in its original packaging, in case the instructions for use of the manual will not be respected, the instrument cannot be taken under guarantee.

The warranty period of the instruments on the range of turbines, contra angles, air or electric motors or other catalog products:

- Contra angle Apollo : 24 months
- Contra angle and Head Apollo Kavo : 12 months
- Turbines Apollo : 24 month , except the turbines des models A4 : 12 months
- Coupling turbines : 12 months
- Oral Hygiene : 12 months
- Air Motors/Air Electric : 12 months
- Spare parts and accessories : 6 months - 12 months

WARRANTY CONDITIONS

The return of the equipment for a warranty repair request must be accompanied by a copy of the invoice and/or delivery note (serial number is mandatory).

The guarantee will be active within the framework of an adequate use

The guarantee lapses in the following cases:

- which has had a shock and which results in the change of a part or a set of parts.
- Inadequate use
- A sudden disassembly causing additional damage
- lack of maintenance due to excessive wear and tear
- A change of parts made by third parties not accredited by Codent Europe
- Incorrect electrical or air connections or adjustments that may cause breakage

Before any repair of a product out of warranty by Codent Europe, an estimate will be established for acceptance before proceeding with the repair.

Codent Europe GmbH

Untere Buchstr. 5

76751 Jockgrim

GERMANY

Tél.: +497271 98899 30

info@codent-europe.com

Contacts :
info@codent-europe.com
www.codent-europe.com



eodent
Let's smile together

ENG